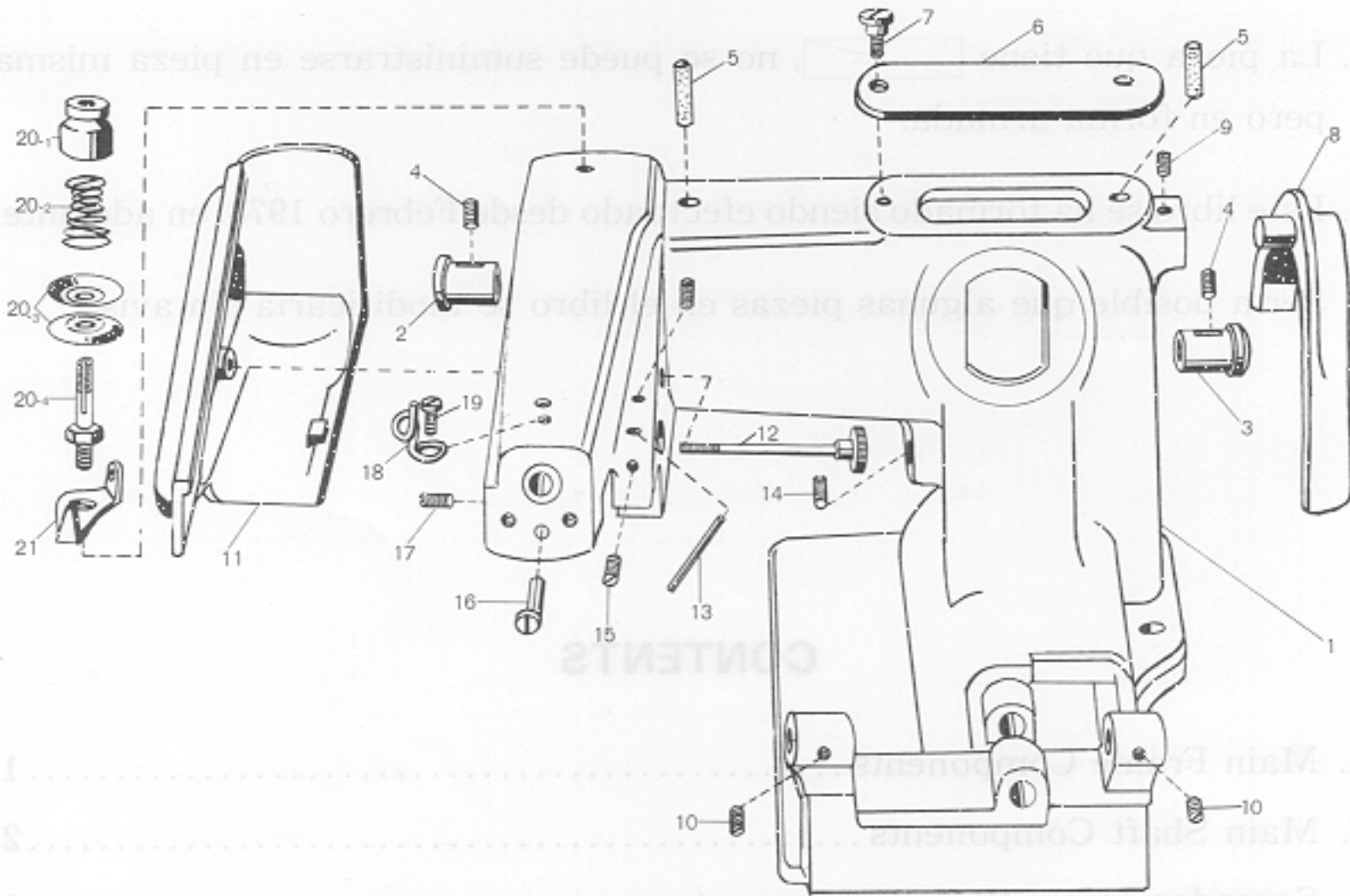


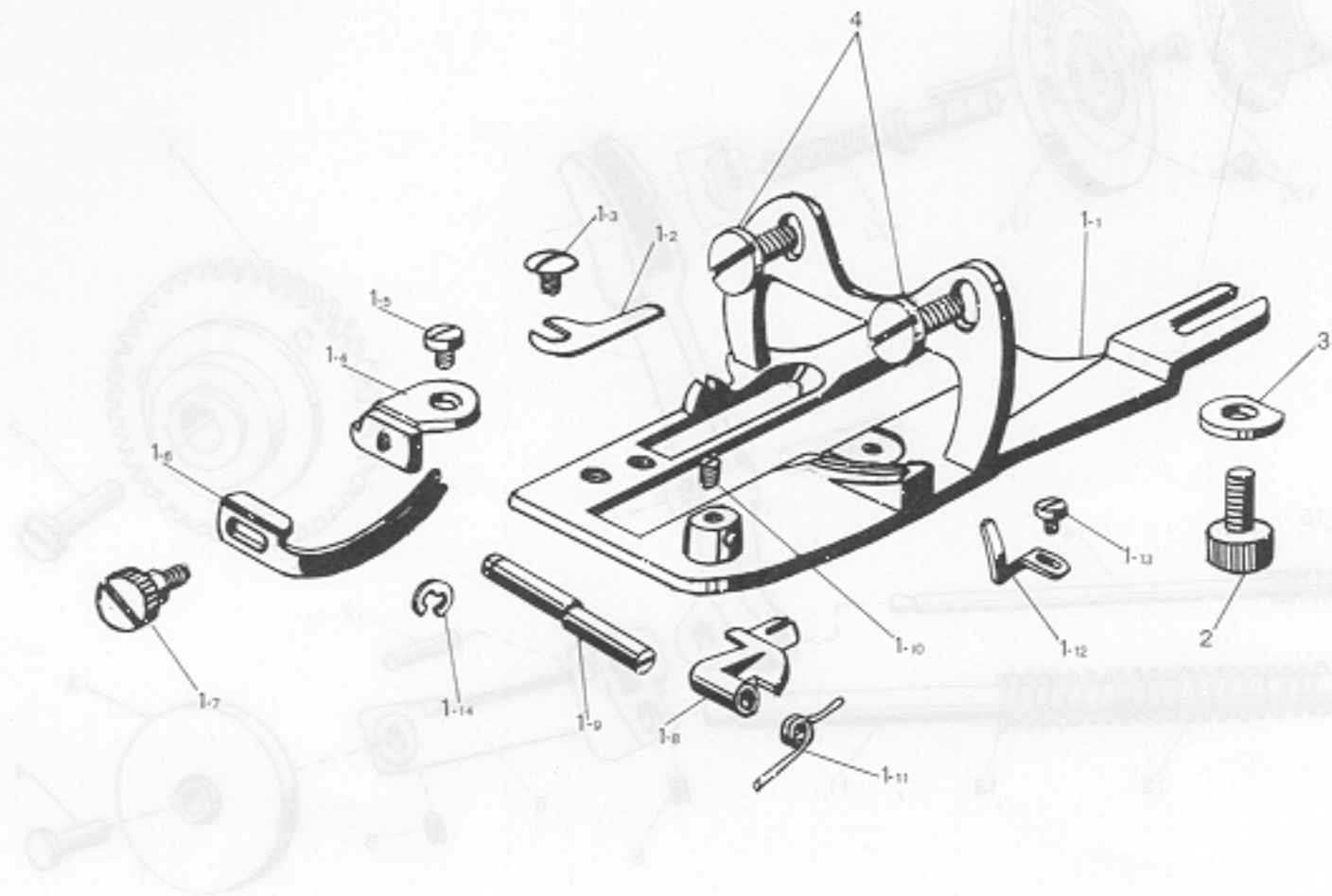
A. Main Frame Components



Ref. No.	Name of Parts	Q'ty	Parts No.	Assembly No.
A-1	Arm	1		
A-2	Upper Shaft Bushing (Left)	1	152005-0-01	
A-3	Upper Shaft Bushing (Right)	1	152006-0-01	
A-4	Screw	2	152137-0-01	
A-5	Wick	2	152122-0-01	
A-6	Top Cover	1	152099-0-01	
A-7	Screw	1	152172-0-01	
A-8	Cover	1	152098-0-01	
A-9	Screw	1	152137-0-01	
A-10	Screw	2	152164-0-01	
A-11	Arm Cover	1	152095-0-01	
A-12	Screw	1	152096-0-01	
A-13	Oil Tube	1	152223-0-01	
A-14	Screw	1	152137-0-01	
A-15	Screw	2	152182-0-01	
A-16	Eccentric Pin	1	152052-0-01	
A-17	Screw	1	152143-0-01	
A-18	Arm Thread Guide	1	152094-0-01	
A-19	Screw	1	152170-0-01	
A-20-1	Tension Control Nut	1	152089-0-01	A-20 Thread Tension Assembly 183034-0-01
A-20-2	Tension Spring	1	152090-0-01	
A-20-3	Tension Disc	2	152091-0-01	
A-20-4	Tension Stud	1	152092-0-01	
A-21	Thread Guide	1	152093-0-01	

From the library of: Diamond Needle Corp

F. Needle Plate Components

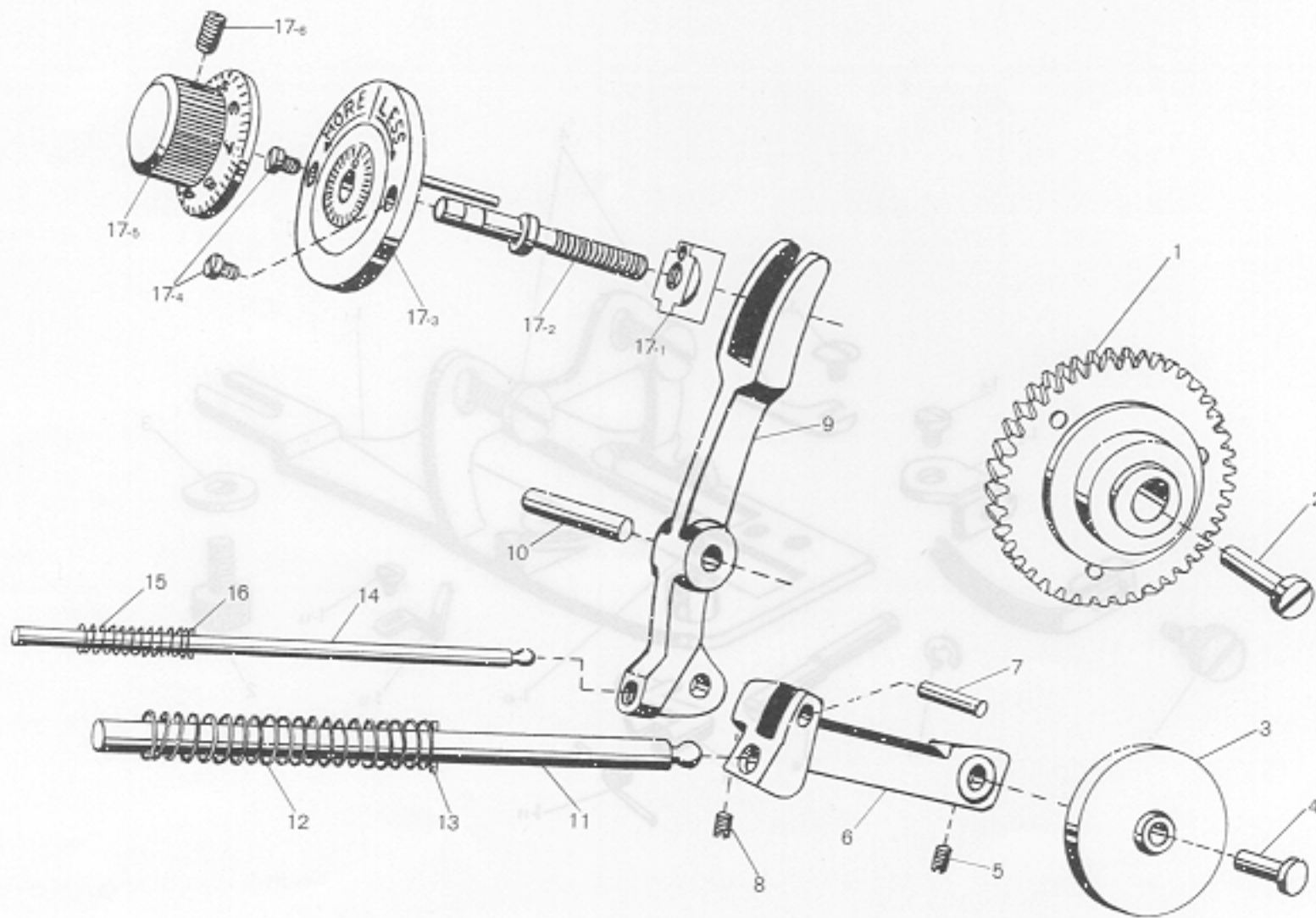


From the library of: Diamond Needle Corp

Ref. No.	Name of Parts	Q'ty	Parts No.	Assembly No.
F-1-1	Needle Plate	1	152045-0-01	F-1 Needle Plate Assembly 183003-0-01
F-1-2	Needle Guide	1	152183-0-01	
F-1-3	Screw	1	152180-0-01	
F-1-4	Edge Guide Holder	1	152051-0-01	
F-1-5	Screw	1	152158-0-01	
F-1-6	Edge Guide	1	152050-0-01	
F-1-7	Screw	1	152181-0-01	
F-1-8	Presser Plate	1	152047-0-01	
F-1-9	Presser Plate Eccentric Pin	1	152048-0-01	
F-1-10	Screw	1	152157-0-01	
F-1-11	Presser Plate Spring	1	152049-0-01	
F-1-12	Thread Handler	1	152046-0-01	
F-1-13	Screw	1	152148-0-01	
F-1-14	Snap Ring	1	153084-0-01	
F-2	Screw	1	152155-0-01	
F-3	Washer	1	152211-0-01	
F-4	Screw	2	152156-0-01	

G. Regulating Parts Components

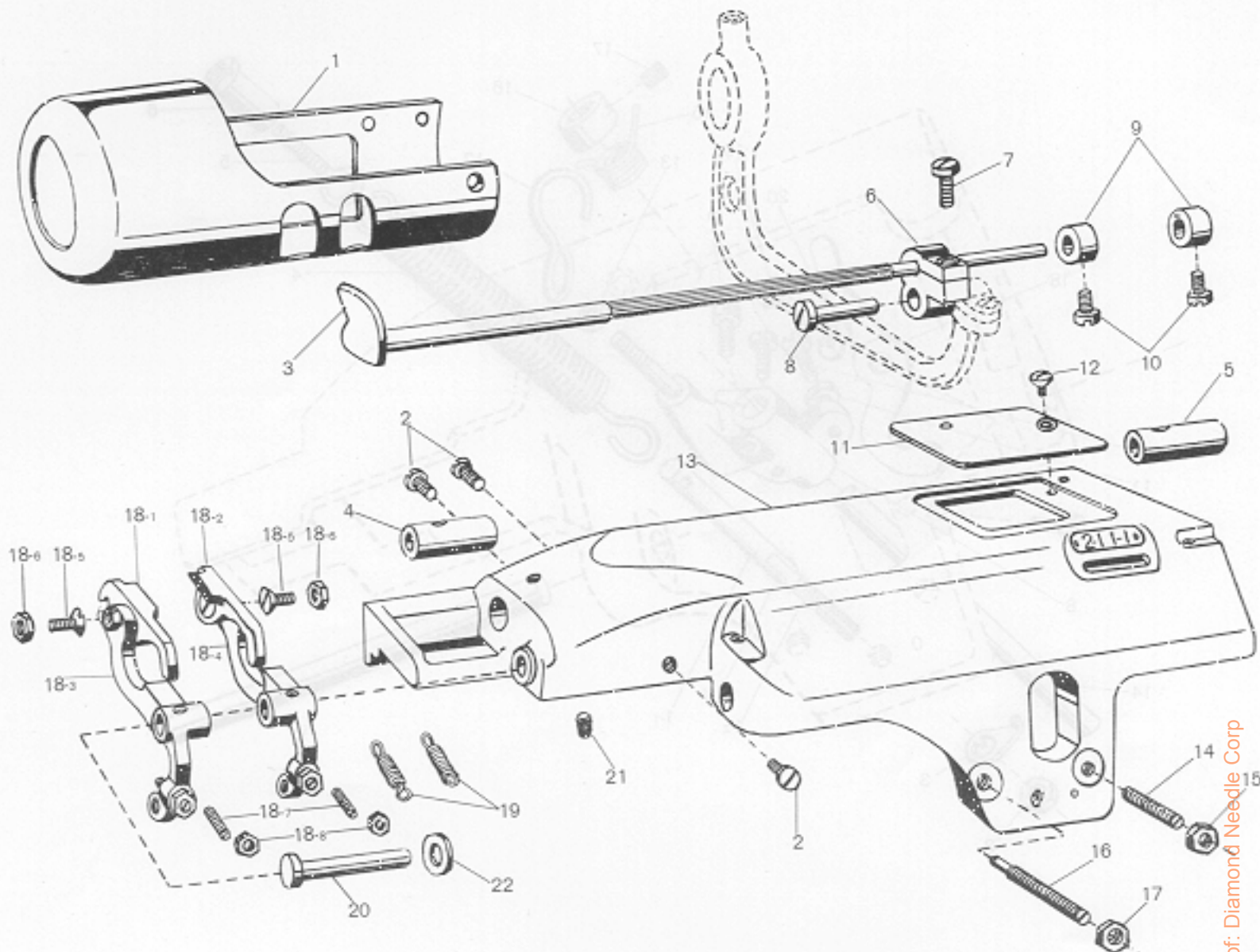
F. Needle Plate Components



From the library of: Diamond Needle Corp

Ref. No.	Name of Parts	Q'ty	Parts No.	Assembly No.
G-1	Skip Gear Assembly	1	152018-0-01	G-17 Regulating Dial Assembly 183035-0-01
G-2	Skip Gear Stud	1	152019-0-01	
G-3	Cam Roller	1	152069-0-01	
G-4	Cam Roller Support Pin	1	152070-0-01	
G-5	Screw	1	152137-0-01	
G-6	Cam Roller Support Arm	1	152067-0-01	
G-7	Pin	1	152068-0-01	
G-8	Screw	1	152143-0-01	
G-9	Regulating Fork	1	152063-0-01	
G-10	Regulating Fork Pin	1	152064-0-01	
G-11	Push Rod (9.45m/m - 3/8")	1	152071-0-01	
G-12	Push Rod Spring	1	152072-0-01	
G-13	Pin	1	152120-0-01	
G-14	Push Rod (6.35m/m - 1/4")	1	152065-0-01	
G-15	Push Rod Spring	1	152066-0-01	
G-16	Pin	1	152221-0-01	
G-17-1	Regulating Dial Shoe	1	152062-0-01	
G-17-2	Regulating Dial Screw	1	152061-0-01	
G-17-3	Scoop Adjusting Plate Assembly	1	152060-0-01	
G-17-4	Screw	2	152162-0-01	
G-17-5	Scoop Adjusting Dial Assembly	1	152059-0-01	
G-17-6	Screw	1	152137-0-01	

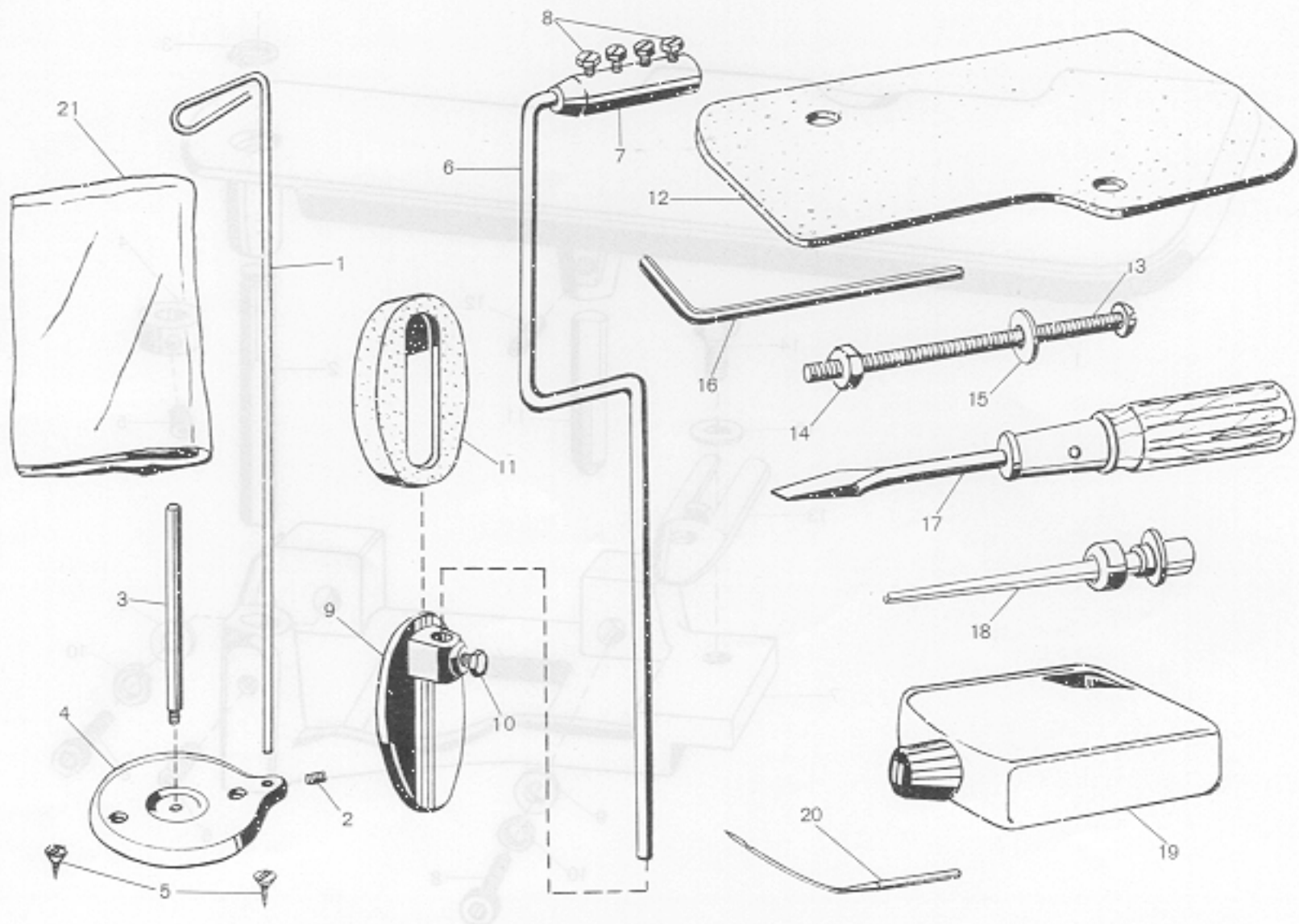
H. Feed Frame Components(No.1)



Ref. No.	Name of Parts	Q'ty	Parts No.	Assembly No.
H-1	Bed Cover	1	152097-0-01	
H-2	Screw	3	152171-0-01	
H-3	Scoop Cam Shaft Assembly	1	152013-0-01	
H-4	Scoop Cam Shaft Bushing (Left)	1	152014-0-01	
H-5	Scoop Cam Shaft Bushing (Right)	1	152015-0-01	
H-6	Scoop Cam Shaft Crank	1	152011-0-01	
H-7	Screw	1	152134-0-01	
H-8	Scoop Cam Shaft Crank Stud	1	152012-0-01	
H-9	Scoop Cam Shaft Collar	2	152016-0-01	
H-10	Screw	2	152136-0-01	
H-11	Window Plate	1	152100-0-01	
H-12	Screw	1	152173-0-01	
H-13	Bed	1	152003-0-01	
H-14	Screw	1	152163-0-01	
H-15	Nut	1	152204-0-01	
H-16	Screw	1	152165-0-01	
H-17	Nut	1	152205-0-01	
H-18-1	Presser Foot Left	1		H-18 Presser Foot Assembly 183004-0-01
H-18-2	Presser Foot Right	1		
H-18-3	Presser Foot Arm Left	1		
H-18-4	Presser Foot Arm Right	1		
H-18-5	Screw	2	152159-0-01	
H-18-6	Nut	2	152202-0-01	
H-18-7	Screw	2	152160-0-01	
H-18-8	Nut	2	152203-0-01	
H-19	Spring	2	152058-0-01	
H-20	Presser Foot Arm Stud	1	152057-0-01	
H-21	Screw	1	152137-0-01	
H-22	Washer	1	152123-0-01	

From the library of: Diamond Needle Corp

Z. Accessories



From the library of: Diamond Needle Corp

Ref. No.	Name of Parts	Q'ty	Parts No.	Assembly No.
Z-1	Thread Guide	1	152118-0-01	
Z-2	Screw	1	152111-0-01	
Z-3	Spool Pin	1	152117-0-01	
Z-4	Cotton Stand Base	1	152116-0-01	
Z-5	Screw	2	152127-0-01	
Z-6	Knee Lifter Bar	1	152109-0-01	
Z-7	Knee Lifter Bar Joint	1	152113-0-01	
Z-8	Bolt	4	152114-0-01	
Z-9	Knee Lifter Plate	1	152115-0-01	
Z-10	Bolt	1	152114-0-01	
Z-11	Knee Lifter Cover	1	152119-0-01	
Z-12	Machine Felt Pad	1	152107-0-01	
Z-13	Screw	2	152128-0-01	
Z-14	Nut	2	152129-0-01	
Z-15	Washer	2	152130-0-01	
Z-16	Wrench	1	152131-0-01	
Z-17	Screw Driver	1	152124-0-01	
Z-18	Oiler	1	152125-0-01	
Z-19	Oil	1	152126-0-01	
Z-20	Needle (System LW x 5T)	1	152028-0-25	
Z-21	Vinyl Cover	1	152179-0-01	